

FLOOD-LINE CERTIFICATIONS:
 I HEREBY CERTIFY THAT THE PROPOSED LAND DEVELOPMENT AREA IS AFFECTED BY THE 1:100 YEAR FLOOD LINE IN TERMS OF THE PROVISIONS OF ARTICLE 144 OF THE WATER ACT, 1998 (ACT 36 OF 1998)

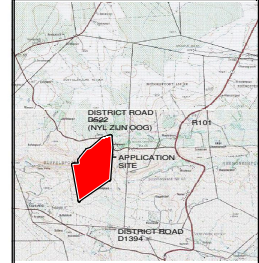
PROFESSIONAL ENGINEER
 (PR ENG REG NO: _____) DATE _____

LAND-USE TABLE

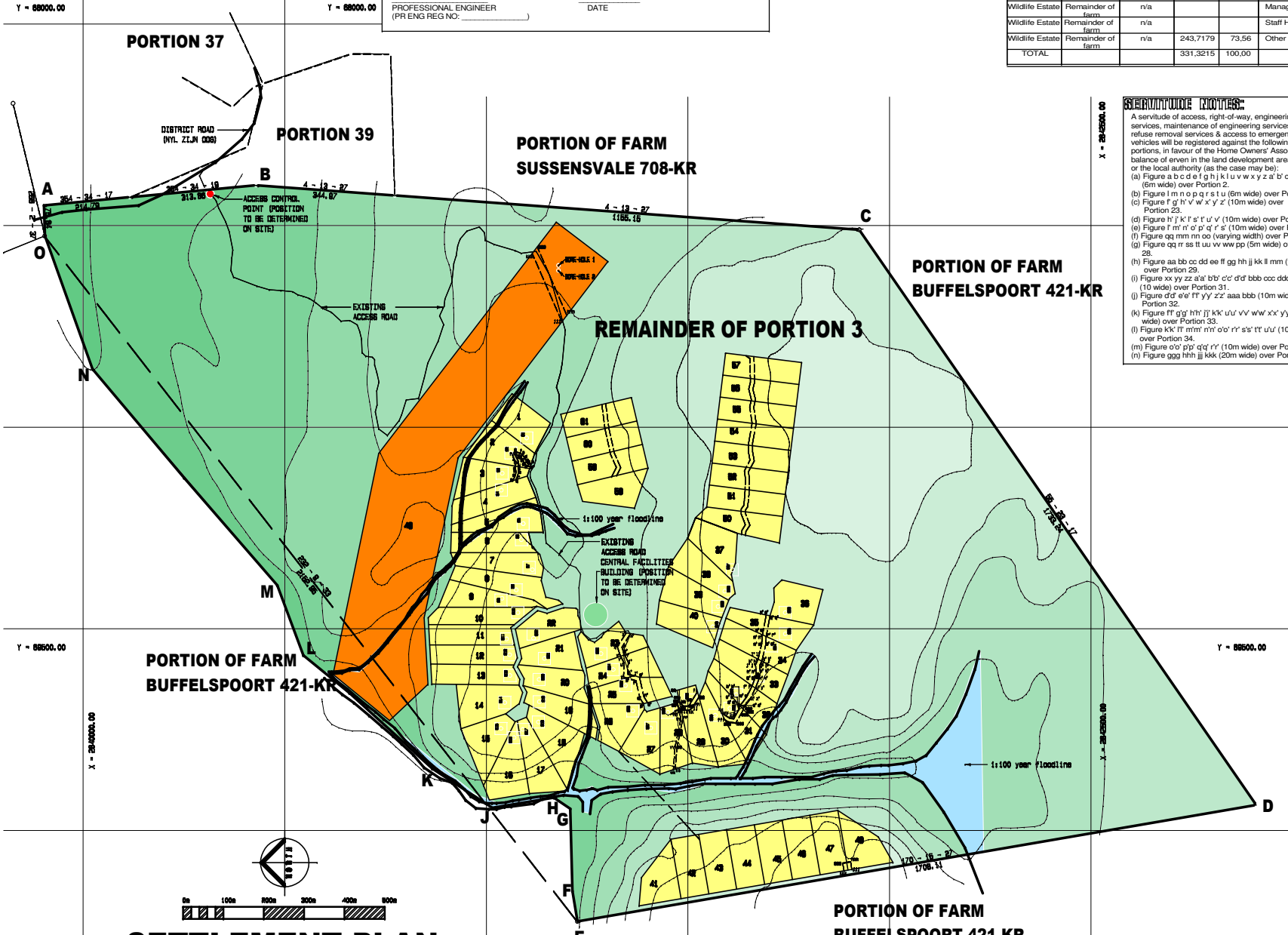
FUTURE ZONING	PORTION NUMBER(S)	NUMBER OF PORTIONS	AREA OF PORTIONS (Ha)	(%)	PROPOSED LAND-USE
Wildlife Estate	1-48, 50-58	57	64,311.0	19.41	Private Game Lodges
Wildlife Estate	49	1	23,292.6	7.03	Bushcamp
Wildlife Estate	Remainder of farm	n/a			Manager's Residences
Wildlife Estate	Remainder of farm	n/a			Staff Housing
Wildlife Estate	Remainder of farm	n/a	243,717.9	73.56	Other Facilities
TOTAL			331,321.5	100.00	

PROJECT:
 PROPOSED PRIVATE RESORT AND SUBDIVISION OF REMAINDER OF PORTION 3 OF THE FARM BUFFELSPOORT 421-KR (MODIMOLLE DISTRICT)

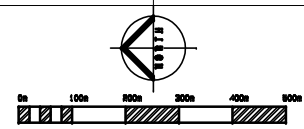
LOCALITY PLAN:



RESERVATION NOTES:
 A servitude of access, right-of-way, engineering services, maintenance of engineering services, refuse removal services & access to emergency vehicles will be registered against the following portions, in favour of the Home Owners' Association, balance of even in the land development area and / or the local authority (as the case may be):
 (a) Figure a b c d e f g h i j k l u v w x y z a' b' c' d' e' (6m wide) over Portion 2.
 (b) Figure l m n o p q r s t u (6m wide) over Portion 3.
 (c) Figure f' g' h' v' w' x' y' z' (10m wide) over Portion 23.
 (d) Figure h' j' k' l' s' t' u' v' (10m wide) over Portion 24.
 (e) Figure i' m' n' o' p' q' r' s' (10m wide) over Portion 25.
 (f) Figure q q m m n n o o (varying width) over Portion 28.
 (g) Figure q q r r s s t t u u v v w w p p (5m wide) over Portion 28.
 (h) Figure a a b b c c d d e e f f g g h h i i j j k k l l m m (varying width) over Portion 29.
 (i) Figure x x y y z z a' a' b' b' c' c' d' d' b b b c c c d d d e e e f f (10 wide) over Portion 31.
 (j) Figure d' d' e' e' f' f' y' y' z' z' a a a b b b (10m wide) over Portion 32.
 (k) Figure t t g' g' h' h' j' j' k' k' u' u' v' v' w' w' x' x' y' y' (10m wide) over Portion 33.
 (l) Figure k' k' l' l m' m' n' n' o' o' r' r' s' s' t' t' u' u' (10m wide) over Portion 34.
 (m) Figure o' o' p' p' q' q' r' r' (10m wide) over Portion 35.
 (n) Figure g g g h h h i i j j k k (20m wide) over Portion 49.



SETTLEMENT PLAN



GENERAL NOTES:
 1. All distances in metres.
 2. All distances and areas are approximate, subject to final survey.
 3. Contour map supplied by Conradi Land Surveyors.

APPROVED:
 BY LIMPOPO DEVELOPMENT TRIBUNAL
 ON _____ 2006
 SIGNATURE _____
 CAPACITY _____

LOCAL AUTHORITY: LIMPOPO DEVELOPMENT TRIBUNAL
APPLICANT: M R T KRUGER ZYNDRANT AGRITOURISM P O BOX 1152 HATFIELD 0208

J PAUL VAN WYK
 TOWN & REGIONAL PLANNERS DEVELOPMENT ECONOMISTS
 P.O. BOX 1152 HATFIELD 0208
 TEL : (012) 361-0217 FAX : (012) 361-2126
 CELL : (082) 893-7370

DRAWN: PWW (OLA)
 SCALE: _____ DATE: 2007/07/12 CAD NO.: buffelport-08a.dwg
 PERSON: J.P. van Wyk CONTOUR INT: _____ PLAN NUMBER: LWSUBUFFELSPOORT02rev 2