

as per client specification  
to Pool & surrounds

**POOL PUMP & FILTER HOUSING**  
• positioned & installed as per specialist below deck  
• unit to be screened as per EPGR Guidelines  
• make provision for cold water tap point

**STAINLESS STEEL BALUSTRADE**  
950mm high, by specialist

**DRAINAGE**  
1000 uPVC soil pipe  
min. fall @ 1:60 to SEPTIC TANK  
ft RE 1.5m before tank connection

wall @1360mm high  
lintels over as per engr. detail

chimney  
stone cladding

wall @1360mm high  
lintels over as per engr. detail

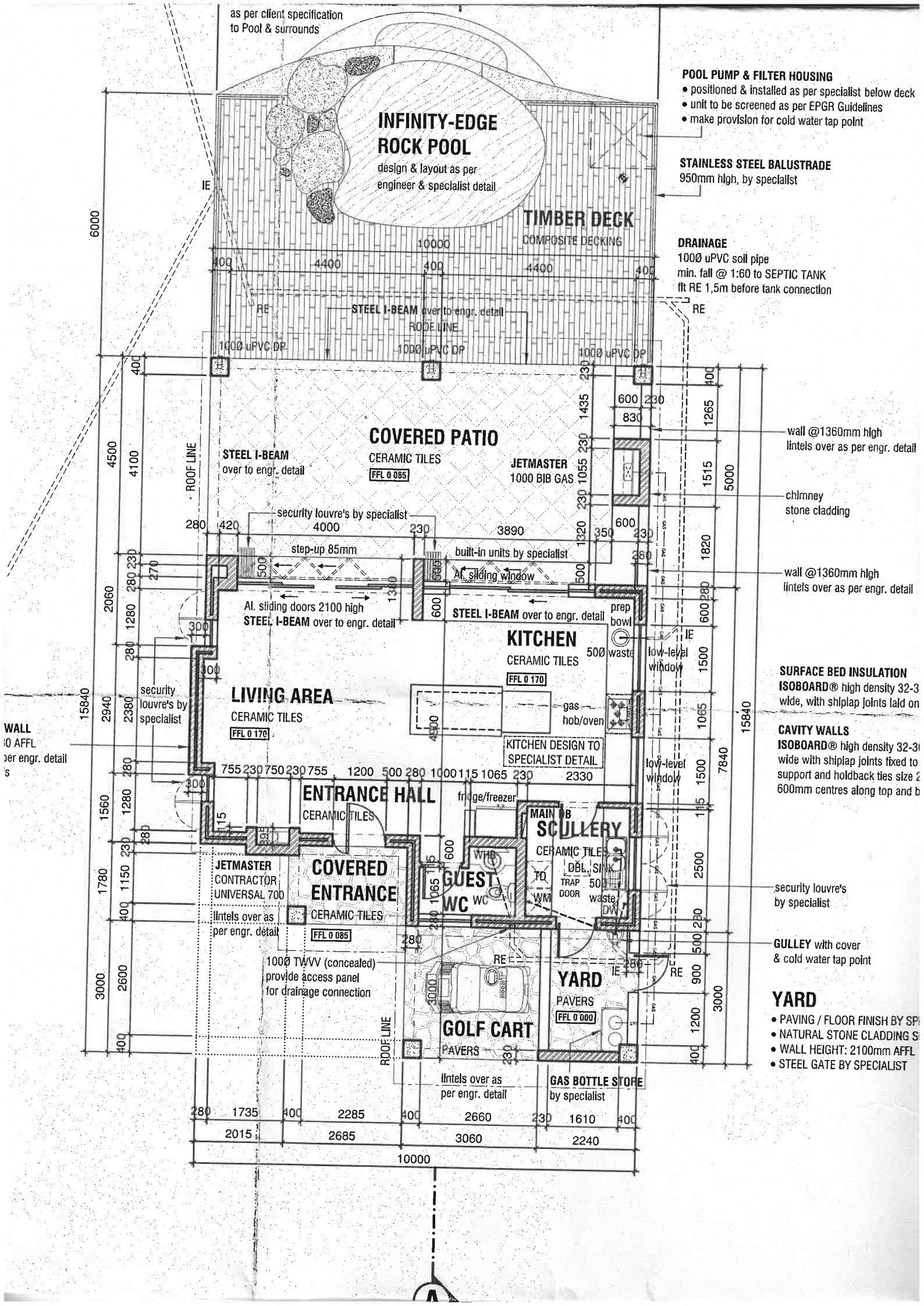
**SURFACE BED INSULATION**  
ISOBOARD® high density 32-3  
wide, with shiplap joints laid on

**CAVITY WALLS**  
ISOBOARD® high density 32-3  
wide with shiplap joints fixed to  
support and holdback ties size 2  
600mm centres along top and b

security louvre's  
by specialist

**GULLEY** with cover  
& cold water tap point

**YARD**  
• PAVING / FLOOR FINISH BY SP  
• NATURAL STONE CLADDING S  
• WALL HEIGHT: 2100mm AFFL  
• STEEL GATE BY SPECIALIST



**INFINITY-EDGE  
ROCK POOL**

design & layout as per  
engineer & specialist detail

**TIMBER DECK**

COMPOSITE DECKING

**COVERED PATIO**

CERAMIC TILES  
FFL 0 085

JETMASTER  
1000 BIB GAS

**LIVING AREA**

CERAMIC TILES  
FFL 0 170

**KITCHEN**

CERAMIC TILES  
FFL 0 170

**ENTRANCE HALL**

CERAMIC TILES

**COVERED  
ENTRANCE**

CERAMIC TILES  
FFL 0 085

**GUEST  
WC**

**MAIN  
SCULLERY**

CERAMIC TILES

**YARD**

PAVERS  
FFL 0 000

**GOLF CART**

PAVERS

**GAS BOTTLE STORE**  
by specialist

6000

4500

4100

2060

15840

1780

3000

IE

ROOF LINE

ROOF LINE

ROOF LINE

ROOF LINE

10000

RODE LINE

STEEL I-BEAM  
over to engr. detail

STEEL I-BEAM  
over to engr. detail

STEEL I-BEAM  
over to engr. detail

STEEL I-BEAM  
over to engr. detail

STEEL I-BEAM  
over to engr. detail

RE

RE

RE

RE

RE

RE

400

400

280

300

300

300

400

400

280

4400

4400

420

500

755

755

1150

2600

1735

400

400

400

400

400

400

400

400

400

400

400

400

400

400

400

400

400

400

400

400

400

400

400

400

400

400

400

400

400

400

400

400

400

400

400

400

400

400

400

400

400

400

400

400

400

400

400

400

400

400

400

400

400

400

400

400

400

400

400

400

400

400

400

400

400

400

400

400

400

400

400

400

400

400

400

400

400

400

400

400

400

400

400

400

400

400

400

400

400

400

400

400

400

400

400

400

400

400

400

400

400

400

400

400

400

400

400

400

400

400

400

400

400

400

400

400

400

400

400

400

400

400

400

400

400

400

400

400

400

400

400

400

400

400

400

400

400

400

400

400

400

400

400

400

400

400

400

400

400

400

400

400

400

400

400

400

400

400

400

400

400

400

400

400

400

400

400

400

400

400

400

WALL  
10 AFFL  
per engr. detail  
's

2015 2685 3060 2240  
10000

